

# OLAutoPW 2.0.0 how-to

First of all I want to excuse my bad english. Last lesson is years ago but I think, everyone will understand what is meant. If not, feel free to contact me

**OLAutoPW** automates the Network Password Entry for any POP3 and IMAP accounts in Outlook 2002/XP **SP3** on Windows Vista and restores full functionality of this version of Outlook on the new Operating System in this way

## System requirements

- ◆ Windows Vista
- ◆ Outlook 2002/XP **SP3**

**Attention: If you don't have installed Outlook SP3 (component of Office SP3), you will get various malfunctions often when sending.**

**Advice: OLAutoPW** does not connect to internet and does not send or receive messages. These functions will be done by Outlook any more and **OLAutoPW** only provides the required password at the right moment. Condition for a smoothly execution therefore is a correct E-Mail account configuration in Outlook. If E-Mail receiving or transmission already fails if you enter the passwords manually, it will fail with using **OLAutoPW** too. So please correct possible wrong account settings in Outlook before you install **OLAutoPW**.

## ◆ Function

1. Outlook tries to connect with mail server
2. Connection fails, because there is no saved password available
3. Outlook generates error **0x800CCC92** when receiving per POP, error **0x800CCC0E** when receiving per IMAP and error **0x800CCC0F** when sending but don't show the error yet.
4. Outlook opens the password window
5. Now **OLAutoPW** became active and passes the complying password to the password window
6. Although the correct password is entered, Outlook displays the under 3. generated error in the Outlook Send/Receive Progress window now and reports an error in Outlook statusline additionally
7. **OLAutoPW** detects opening of Outlook Send/Receive Progress window too and closes this window dependently from settings (see "Outlook Send/Receive Progress window") automatically

## ◆ International Configuration

If you work with a German Outlook or Setup already contains the window-configuration file for your Outlook language and following window is not shown at the very first **OLAutoPW** start, please continue with **Configuration Password Window**.

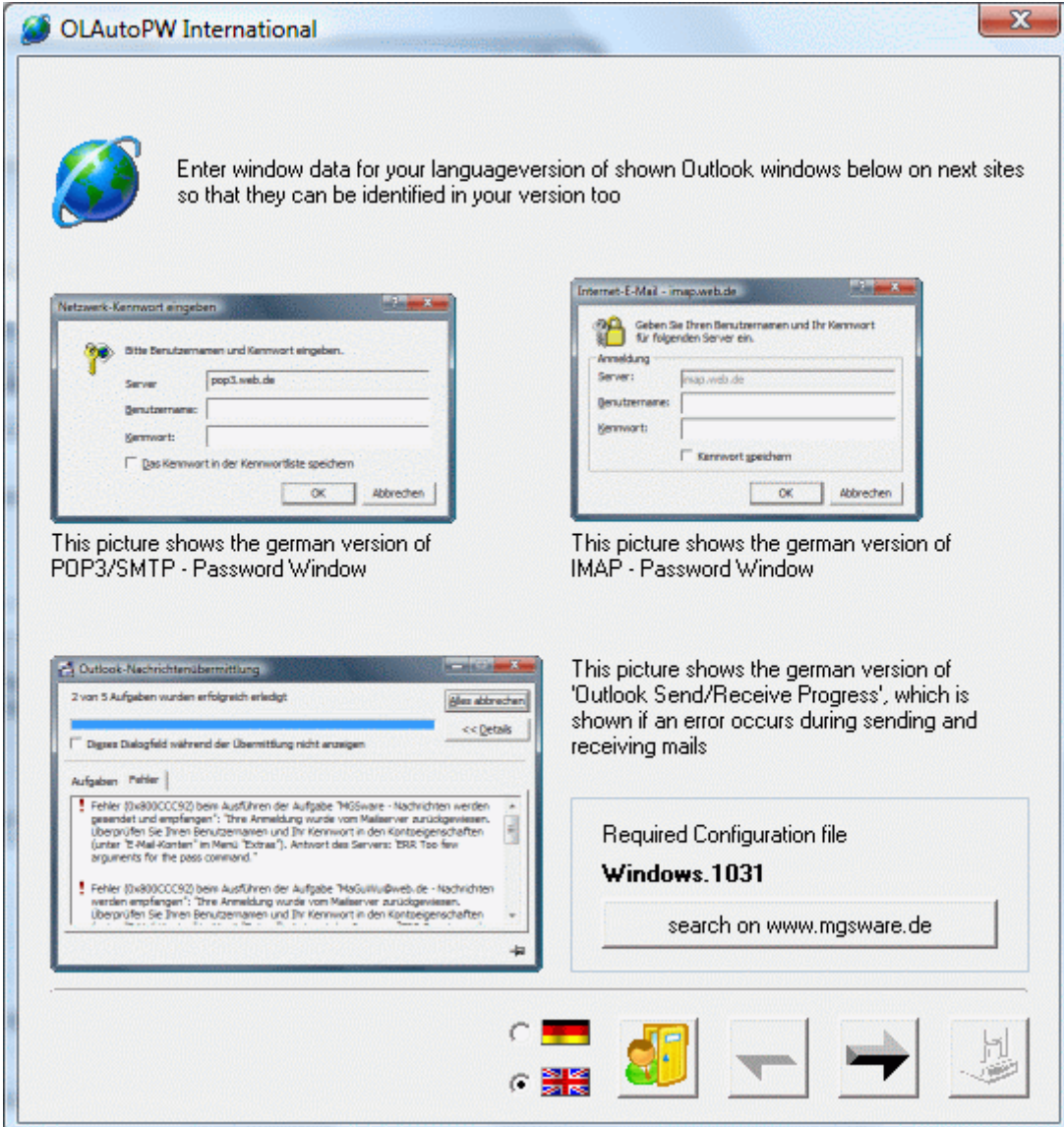
**OLAutoPW** identifies Outlook Password windows and Outlook Send/Receive Progress window by their window titles and their window classes and the appreciable controls of these windows by their classes and position in window.

Information is saved in language specific window-configuration files, where some of them are already contained in Setup.

But if not valid window-configuration file does exist for your selected Outlook language, you have 2 choices to get it:

### 1. per Download

of configuration file with a click on button „**search on www.mgsware.de**“



The screenshot shows the main window of OLAutoPW International. At the top, it says "Enter window data for your languageversion of shown Outlook windows below on next sites so that they can be identified in your version too". Below this, there are three example Outlook windows:


- Netzwerk-Kennwort eingeben**: A German version of the POP3/SMTP - Password Window. It has fields for "Server" (pop3.web.de), "Benutzername:", and "Kennwort:". There is a checkbox for "Das Kennwort in der Kennwortliste speichern" and buttons for "OK" and "Abbrechen".
- Internet-E-Mail - imap.web.de**: A German version of the IMAP - Password Window. It has fields for "Server" (imap.web.de), "Benutzername:", and "Kennwort:". There is a checkbox for "Kennwort speichern" and buttons for "OK" and "Abbrechen".
- Outlook-Nachrichtensübermittlung**: A German version of the Outlook Send/Receive Progress window. It shows a progress bar and a list of tasks with error messages. The error messages are in German and mention "MGSware - Nachrichten werden gesendet und empfangen" and "MaGulluWeb.de - Nachrichten werden empfangen".

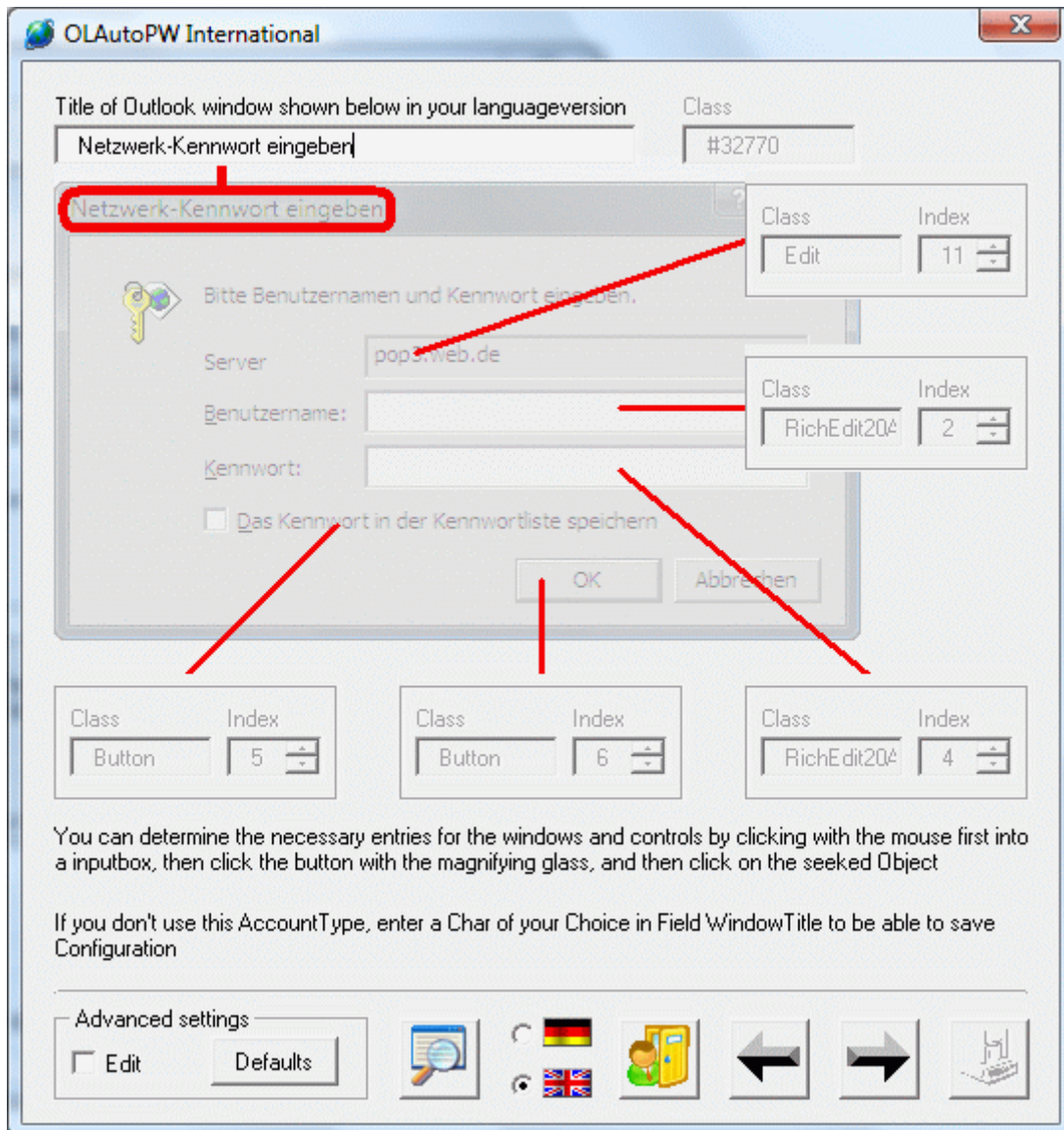
At the bottom right of the main window, there is a section titled "Required Configuration file" with the text "Windows.1031" and a button labeled "search on www.mgsware.de". At the bottom of the window, there are icons for language selection (German and English), a home icon, and navigation arrows.

If required configuration file was found on server, all information for window identification is available now and you can leave the assistant.

Otherwise please click on  to pick up information

## 2. per manually Configuration

Enter information with keyboard or set focus to a textbox to activate button  and pick up information with the mouse. Please use selection with the mouse if you have problems to enter Cyrillic, Asian and comparable window titles.



Customization of control properties is possible after activation of checkbox „**Advanced settings**“ (with mouse selection too), but this is not necessary usually.

Repeat information input for IMAP password window and Outlook Send/Receive Progress

window with a click on  and save configuration file.

Because Outlook adds account name to the title of IMAP password window, be sure that you enter only the identically part of IMAP password window, e.g. original title

**Internet-E-Mail – MaGuWu@web.de**

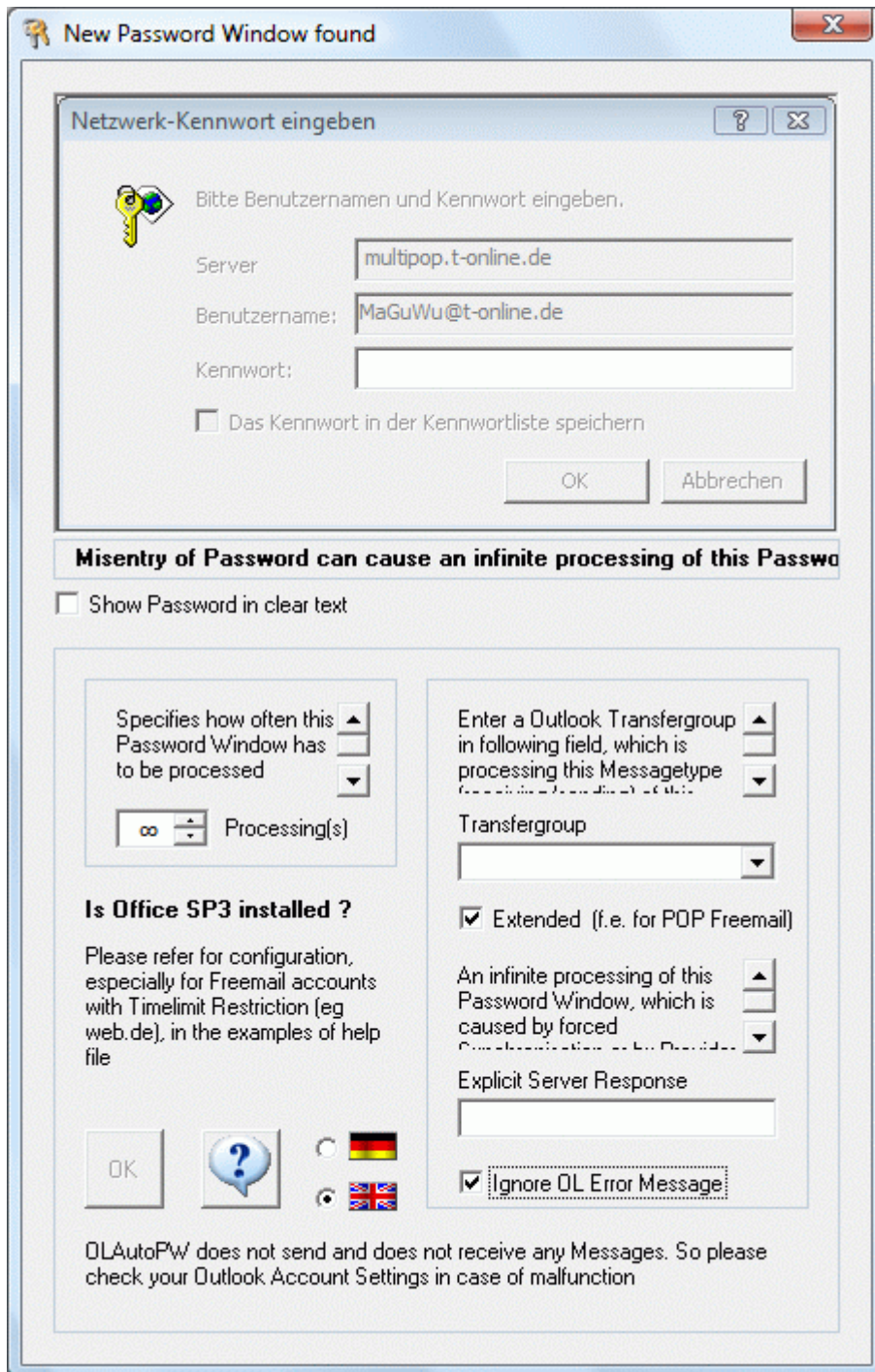
is to be entered as / changed in

**Internet-E-Mail –**

## ◆ Configuration Password Window

OLAutoPW kidnaps every unknown password window at the very first popup and shows it in a dialog, where all settings for processing are to be entered.

**ATTENTION: Tests have shown that Outlook hangs if an IMAP password window is shown for a longer time (even without running OLAutoPW). So configure IMAP password windows quickly and prior to the POP password windows.**



Enter password in original password window.

Because entering of a wrong password causes an infinite processing of this password window, you can select to show password in clear text and you can eliminate a misentry in this way.

Otherwise there exists a textfield or a tooltip for every setting, where you can read further information about the setting.

## Examples

- **t-online.de**  
(Incoming mail server <> Outgoing mail server)

### **SMTP**

Processings = 1  
Transfergroup = All Accounts  
Extended = 0

### **POP3**

Processings = 1  
Transfergroup = All Accounts  
Extended = 0

### **IMAP**

Processings = 1  
Transfergroup = All Accounts  
Extended = 0

If you use IMAP accounts, you have to add error code **0x800CCC0E** to setting „**close if each error message contains one of this error codes**“ (see ‚Options/Outlook Send/Receive Progress‘)

- **freenet.de**  
(Incoming mail server = Outgoing mail server)

### **POP3 = SMTP**

Processings = 2 (if outgoing mail server requires authentication)  
Processings = 1 (if outgoing mail server does not require authentication)  
Transfergroup = All Accounts  
Extended = 0

- **web.de**

### **SMTP**

Processings = 1  
Transfergroup = All Accounts  
Extended = 0

### **POP3 (Club members)**

Processings = 1  
Transfergroup = All Accounts  
Extended = 0

### **POP3 (FreeMail with timelimit restriction)**

Processings = ∞ (permanently)  
Transfergroup = e.g. FreeMail (to be created)  
Extended = 1  
Explicit Server Response = 15 Minuten (Server response is changed once in a while)  
Ignore OL Error Message = 1

## **Explanation for „Processings“**

Defines, how often a password window has to be processed.

**OLAutoPW** quits by itself, if no password window is configured for permanently processing and all password windows are processed.

Standard settings for

### **1. Incoming mail server <> Outgoing mail server or IMAP**

Processings = 1

### **2. Incoming mail server = Outgoing mail server**

if outgoing mail server requires authentication: Processings = 2

if outgoing mail server does not require authentication: Processings = 1

### **3. Special case POP3 FreeMail with timelimit restriction**

Processings = ∞ (permanent)

## **Explanation for „Transfergroup“**

Defines, to which Outlook-Transfergroup this account belongs to.

Because Outlook cancels the first try of connection of each account because missing password (see 'Function'), **OLAutoPW** forces a new synchronisation for the defined Outlook Transfergroup.

Following will affect to all accounts, which belongs to a Outlook Transfergroup, if you don't enter the Transfergroup in **OLAutoPW** or entered Transfergroup does not exist in Outlook:

**Incoming mail server:** Receiving mails only works at next automatically transmission or user has to click on Send / Receive

**Outgoing mail server:** Sent mails stuck in Outbox until next automatically transmission or user has to click on Send / Receive

### **Special case POP3 Freemail with timelimit restriction**

For this accounts it's recommended to create a new transfergroup (see explanation for 'Explicit Server Response')

## Explanation for „Explicit Server Response“

This setting is for controlling password windows, which are opened by Outlook repeatedly even though login to server has finished successfully, e.g. **POP3 with timelimit restriction**, and is only relevant, if Processings = permanent and a valid transfergroup was entered for this account.

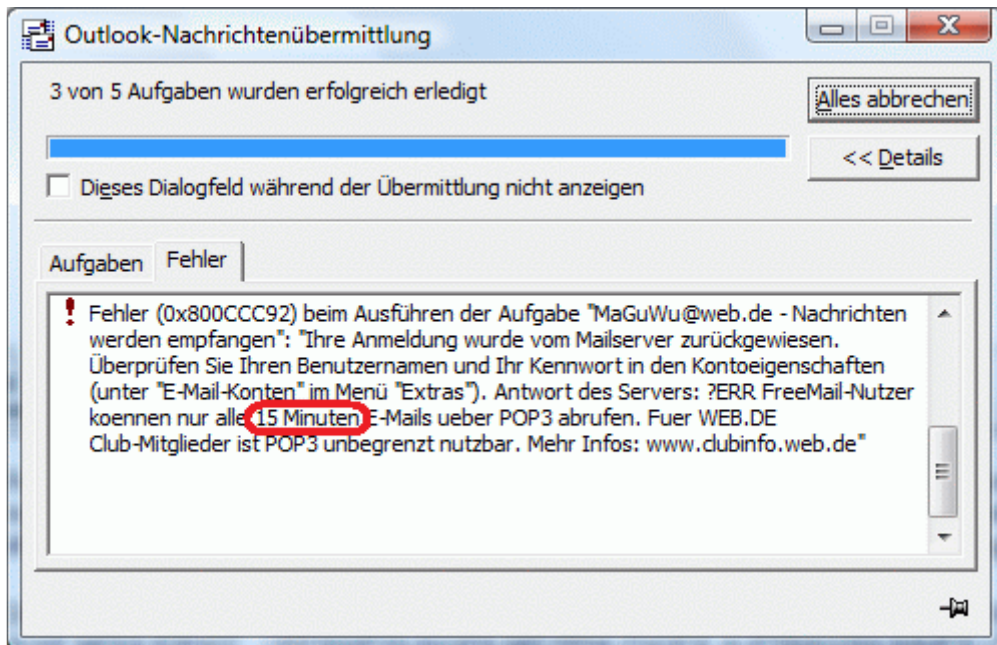
If interval for automatic transmission is set to a value < timelimit restriction in Outlook transmission settings or user clicks on Send/Receive in this time, Outlook opens password window every time too, even though login to server has finished successfully. OLAutoPW processes this password window now and forces a new synchronisation for this account if a transfergroup has been configured for this account. But this forcing of a new synchronisation causes opening of password window again and so password window will be processed again and again.

How described above, you can avoid infinite processing with Processing <> permanent or if you don't enter a transfergroup.

But in these two cases there is a user intervention required always.

If you want to work completely without user intervention, you have a third choice with **Explicit Server Response**.

**OLAutoPW** analyzes server response of Outlook Send/Receive Progress window error messages then



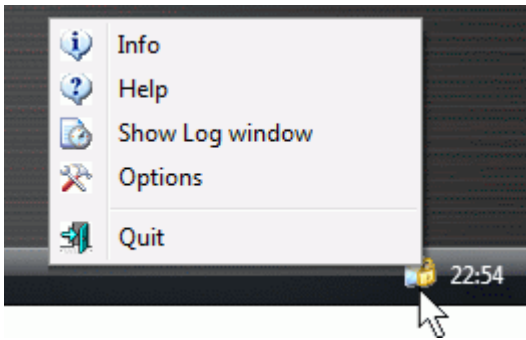
and does not force a new synchronisation for the transfergroup, if string (here: **15 Minuten**) was found in server response.

This choice only makes sense, if Processings = permanent for this account and if you create a separate transfergroup for each of these special accounts.

Furthermore only the belonging account and this only for Message Download is to be marked in these separate transfergroups and the account is to be excluded for Message Download in all other transfergroups (sending over 'All accounts')

This is the only way to work meaningful and without any user intervention with Outlook, even if correct configuration of several freemail accounts is tedious.

## ◆ Systray Menu



This menu opens with a right mouse button click on symbol beside the clock and offers following choices

- **Info**

Window with information about license agreement and links for E-Mail und Support

- **Help**

This Helpfile

- **Log window**

Show or hide Log window

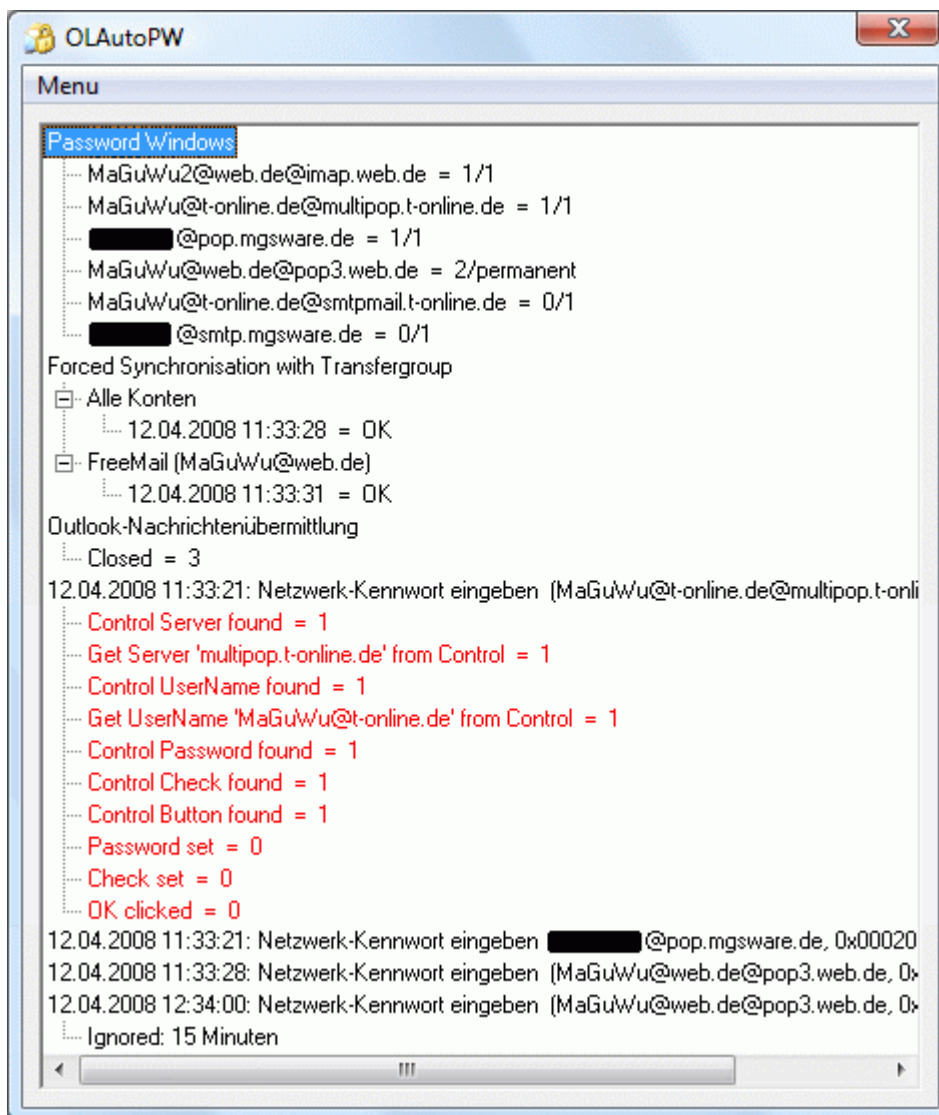
- **Options**

(see Options)

- **Quit**

Quit **OLAutoPW** without quitting Outlook.

◆ Log window



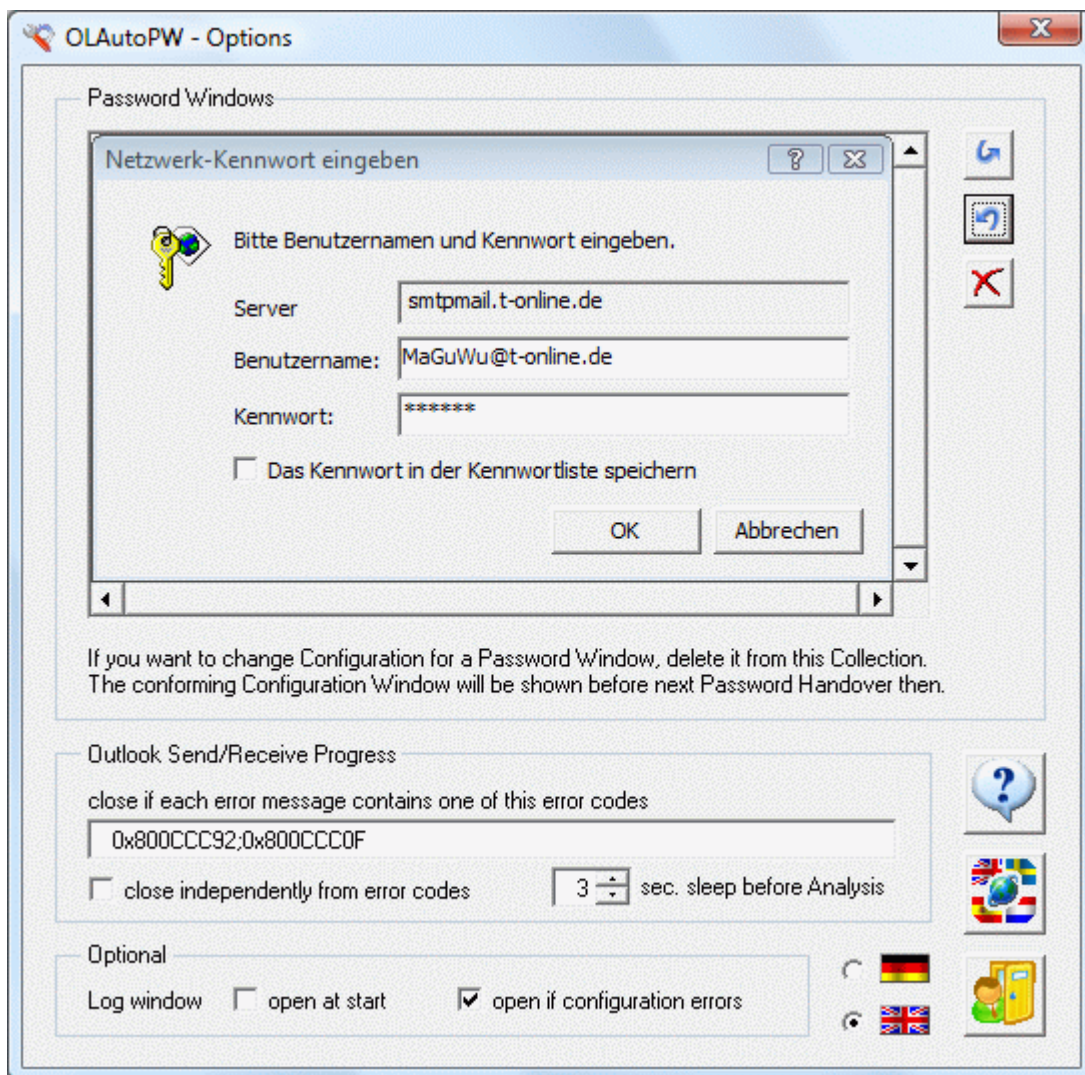
Password Windows	Lists all password windows, which are configured in <b>OLAutoPW</b> and shows, how often a password window has been processed.
Forced Synchronisation with Transfergroup	Shows, for which Transfergroup a new synchronisation has been forced.
Outlook-Nachrichten...:	Shows, how often Outlook Send/Receive Progress window has been closed.

If 0 is shown after a function in sub nodes of a found password window then this function has failed and you should check settings in 'International Configuration'.

Control Server found = 0	The control could not be found in password window. Check settings in 'International Configuration'
Get Server ,X' from... = 0	Server name could not be red from control in password window
Control UserName found = 0	The control could not be found in password window. Check settings in 'International Configuration'
Get UserName X from... = 0	Username could not be red from control in password window
Control Password found = 0	The control could not be found in password window. Check settings in 'International Configuration'
Control Check found = 0	Checkbox „Save Password“ could not be found in password window. Check settings in 'International Configuration'
Control Button found = 0	Button „OK“ could not be found in password window. Check settings in 'International Configuration'
Password set = 0	Could not set password in password window
Check set = 0	Could not activate checkbox „Save Password“ (activation is necessary in IMAP password windows)
OK clicked = 0	Don't get a result from Password window after clicking OK

Ignoring of a password window (see explanation for ,Explicit Server Response') will be documented with reason too

## ◆ Options



### - Password Windows

There is no option for changing configuration of a password window, because configuration of a password window is a single cause usually.

If it becomes necessary to change settings nevertheless, please delete the item from the list and the password window configuration dialog (see 'Configuration Password Window') will be shown at next password input again.

## - Outlook Send/Receive Progress

**OLAutoPW** becomes active, if Outlook opens a Password window after a unsuccessful try of connection because password is missing.

At this time **OLAutoPW** acquires control of this Password window, reads out 'Server' and 'Username', searches for the corresponding password in **OLAutoPW** Config, writes found password to Outlook Password window and clicks OK.

But Outlook has already created a error message for the first failed connection try and opens Outlook Send/Receive Progress window additionally to the Password window to display this error.

For this window **OLAutoPW** acquires control too, hides this window during processing of Password windows and closes this window by default, if no other errors than the unavoidable errors **0x800CCC92** and **0x800CCC0F** (and **0x800CCC0E** with **IMAP – please complete**) had occurred.

### - close only if every error message contains one of this error codes

You can enter additional error codes where Outlook Send/Receive Progress window should be closed automatically after processing of Password windows.

Then **OLAutoPW** compares error list of Outlook Send/Receive Progress window to this error codes and does not close Outlook Send/Receive Progress window, if one or more match(s) can not be found in error messages.

If you delete or change the default error codes, Outlook Send/Receive Progress window can not be closed automatically anymore.

Error code **0x800CCC92** will be created by Outlook for each **POP3** account at every first connection try of Outlook for receiving messages

Error code **0x800CCC0E** will be created by Outlook for each IMAP account at every first connection try of Outlook for getting headers

Error code **0x800CCC0F** will be created by Outlook for each account at every first connection try of Outlook for sending messages if outgoing mail server requires authentication.

### - close independently from error codes

**OLAutoPW** does not check error list of Outlook Send/Receive Progress window anymore and closes this window always if all password windows are processed

### - sleep before Analysis

**OLAutoPW** starts analysis if no more password window can be registered in selected time.

Increase this value if you have problems with automatic closing of Outlook Send/Receive Progress window

## - Optional

Control of automatic display of Log window

## - International Configuration



With a click on this button you will come to the 'International Configuration'

Newest how-to:

<http://www.mgsware.de/fileadmin/mgsware/OLAutoPW/OLAutoPWEng.pdf>